

# DC to AC PANEL MOUNT SOLID STATE RELAY

## Features include:

- 10 to 150Amp AC
- 12-480VAC
- DC Control
- Control Input Green LED & Output Revers Red LED
- Blocking voltage 800 to 1200V
- MOV protected Output (Optional)
- Transient Immunity to 2000Vdc/ $\mu$ Sec
- Zero Cross Synchronized
- Din Rail Mounted ( Optional)
- IP20OutputCover
- 4000VIsolation
- N/O Configuration
- Free From EMI/RFI
- Noise Less Switching



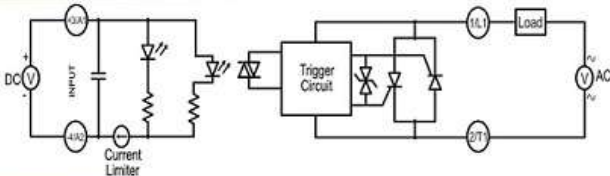
## Specification

Output Load		IT	A	10	16	25	40	50	60	75	90	100	125	150
RMS on State Current														
Output RMS @ 55 °C. Amp With Heatsink	IT	A	7	11	18	20	25	30	52	63	70	87	105	
Main Control Output Voltage	Vrms	Vac	12-480	12-480	12-480	12-480	12-480	12-480	12-480	12-480	12-480	12-480	12-480	
Peak Off state Blocking Voltage	Vdrm	Vpk	800	800	800	800	1200	1200	1200	1200	1200	1200	1200	
Peak one single cycle Current, 50Hz (Non-Rep)	Itsm	A	100	160	250	400	520	750	800	870	1020	1200	1450	
On state Voltage Drop	Vtm	Vac	1.6	1.6	1.6	1.6	1.6	1.6	1.6	1.6	1.6	1.6	1.6	
Off state Leakage Current	ldrm	mA	5	5	5	5	5	5	5	5	5	5	5	
Critical Rate of Rise off State Voltage	dv/dt	V/ $\mu$ s	400	400	500	500	500	500	500	500	500	500	500	
Holding Current	Ih	mA	50	50	75	80	100	150	200	100	100	125	150	
Fusing Current	I <sup>2</sup> T	A <sup>2</sup> S	55	144	340	880	1500	3500	3200	5500	5500	12500	15000	
Turn-On (Zero/Random)	T-on	ms	40	40	40	40	40	40	40	40	40	10/0.1	10/0.1	
Turn-Off (Zero/Random)	T-off	ms	80	80	80	80	80	80	80	80	80	80	80	
Full Current Baseplate Temperature	Max.	°C	90	90	90	90	90	90	90	90	90	100	100	
Frequency Range	F	Hz	47-63	47-63	47-63	47-63	47-63	47-63	47-63	47-63	47-63	47-63	47-63	
Operating Temperature	Temp.	°C	-30/+80	-30/+80	-30/+80	-30/+80	-30/+80	-30/+80	-30/+80	-30/+80	-30/+80	-30/+80	-30/+80	
Power Dissipation	Watts	Amp	1.1	1.1	1.1	1.1	1.1	1.1	1.1	1.1	1.1	1.2	1.2	

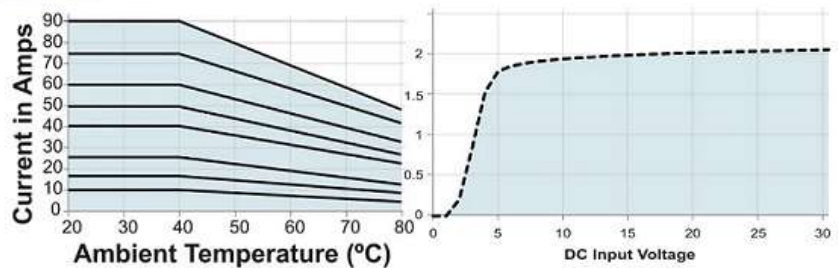
  

Input Signal		VDC	3 to 32	3 to 32	3 to 32	3 to 32	3 to 32	3 to 32	3 to 32	3 to 32	3 to 32	3 to 32	3 to 32	3 to 32
DC Control Voltage, ON (LED on at 3.5V)		VDC	3 to 32	3 to 32	3 to 32	3 to 32	3 to 32	3 to 32	3 to 32	3 to 32	3 to 32	3 to 32	3 to 32	3 to 32
DC Control Current		mA	9-25	9-25	9-25	9-25	9-25	9-25	9-25	9-25	9-25	50	50	
Pick-up Voltage		VDC	6.0	6.0	6.0	6.0	6.0	6.0	6.0	6.0	6.0	3.0	3.0	
Drop-out Voltage		VDC	1.0	1.0	1.0	1.0	1.0	1.0	1.0	1.0	1.0	1.0	1.0	
Input Resistance (K)		Ohms	0.6	0.6	0.6	0.6	0.6	0.6	0.6	0.6	0.6	1.3	1.3	

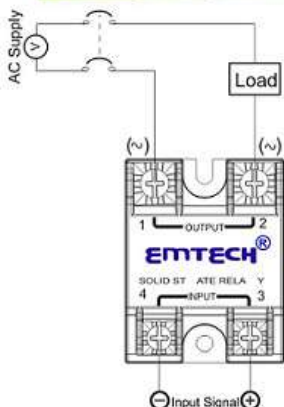
## Schematic



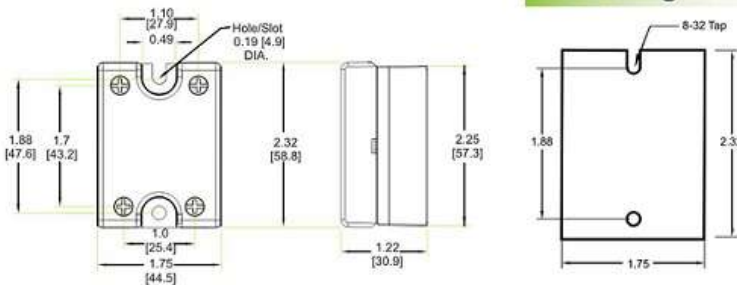
## Derating Curve



## Wiring Diagram



## Mounting Dimension



## General, All Models

CaseMaterial	ULV0Lexan
OutputTerminalTorque	20 in/lbs
ControlTerminalTorque	6 in/lbs
Mounting Screw Torque	15 in/lbs
AmbientTemperature	-40°C to 85 °C
WireGauge, Output	(2) 8awg Max.
WireGauge, Control	(2) 12awg Max.

## Precaution

- \* Top protect SSR from most shorts, use use with a clearing specification less than 33% of the SSR.
- \* Heatsink on vertical surface with vertical fins, 40°C free air 4" above and 1" below and TPST under SSR.